

Specifications

Nominal Voltage	6V
Nominal Capacity	681 Watts/cell (15 Min. rate to 1.67V/cell @ 77°F) 210Ah (20 Hr. rate to 1.80 V/cell @ 77°F)
Dimensions	Length 12.7 inches
	Width 7.0 inches
	Height (with Terminal) 9.1 inches
Weight	Approx. 60.2 lbs. (27.3 kg)
Container Material	ABS - Flame Retardant UL94
Terminal / Torque Rating	T8 / 65 in. lbs.
Preferred Operating Temp.	68-77°F
Operating Temp Range	Discharge: -15~50°C (5~122°F)
	Charge: 0~40°C (32~104°F)
	Storage: -15~40°C (32~104°F)
Internal Resistance	Approx. 1.3 mOhms
Max. Discharge Current	2520A (5s)
Float Voltage	2.25 – 2.28 Vpc at 77°F
Max. Charge Current Allowed	63 Amps
Self Discharge	3% of capacity declined per month at 20°C (68°F). The batteries may be stored for up to 6 months at 25°C (77°F) and then a freshening charge is required. For higher temperatures the time interval will be shorter.



Applications

- UPS (High rate)
- High power backup supply
- Emergency power supply
- Emergency lighting
- Electric starting



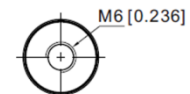
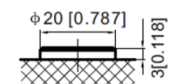
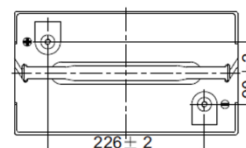
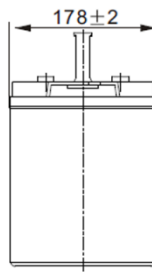
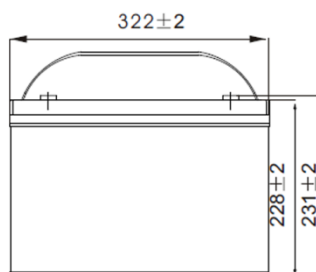
UL File No. MH19767

Constant Power Discharge (Watts/Cell) at 25°C (77°F)

F.V/Time	5 min	10 min	15 min	20 min	30 min	45 min	1 hr
1.85 V/cell	719.0	603.6	532.1	466.4	360.5	275.0	228.7
1.80 V/cell	829.1	673.1	572.5	496.5	383.9	291.7	238.2
1.75 V/cell	962.1	721.4	612.2	522.0	403.5	303.4	247.0
1.70 V/cell	1003.7	764.1	647.4	552.0	424.4	317.8	257.5
1.67 V/cell	1066.5	809.2	681.0	574.8	440.1	327.4	264.7
1.60 V/cell	1134.4	847.4	706.0	589.9	448.6	332.9	268.6

Constant Current Discharge (Amperes) at 25°C (77°F)

F.V/Time	5 min	10 min	15 min	20 min	30 min	45 min	1 hr
1.85 V/cell	378.0	313.7	274.7	239.4	183.9	139.4	115.3
1.80 V/cell	441.0	352.8	298.2	256.8	197.4	149.1	121.0
1.75 V/cell	516.6	383.0	321.7	272.0	209.0	156.2	126.4
1.70 V/cell	544.3	409.5	343.6	289.8	221.5	164.9	132.7
1.67 V/cell	584.4	438.4	364.6	304.2	231.0	170.8	137.1
1.60 V/cell	633.7	468.7	384.7	318.8	240.5	177.0	141.8



Unit: mm [inches]